

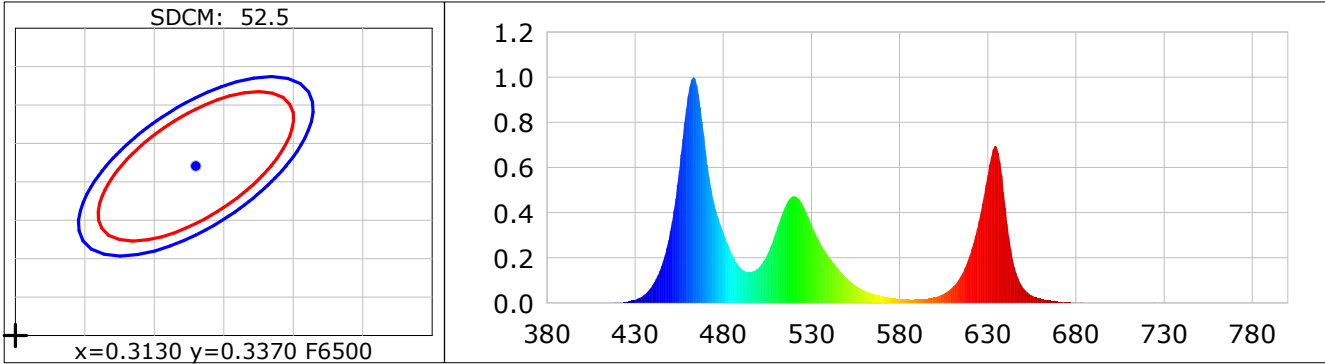
**Lightsource Test Report**

**Product Infomation**

Product Category: LED STRIP	Product Type: LED STRIP
Product Spec: IRIS 10	Product Number: 293
Manufacturer: TECSOLELED S.L.	Buyer: TECSOLELED S.L.

**CIE Colorimetric Parameters**

Chromaticity coordinates:  $x=0.2410$   $y=0.2555$   $u(u')=0.1726$   $v=0.2745$   $v'=0.4118$   
 CCT:  $T_c=31350K$  ( $duv=0.00999$ ) Color Ratio:  $R=0.199$   $G=0.678$   $B=0.123$   
 Peak Wavelength: 463.2nm Half Bandwidth: 19.7nm  
 Dominant Wavelength: 479.8nm Color Purity: 0.383  
 CRI:  $R_a=52.7$ ,  $avgR(1\sim14)=32.6$ ,  $avgR(1\sim15)=31.4$  TM30:  $R_f=55$ ,  $R_g=103$   
 GAI:  $GAI\_BB\_8=129.9$ ,  $GAI\_BB\_15=128.3$ ,  $GAI\_EES=141.3$   
 R1 =39 R2 =65 R3 =76 R4 =59 R5 =61 R6 =66 R7 =57 R8 =-2  
 R9 =-221 R10=20 R11=49 R12=63 R13=41 R14=82 R15=15  
 Color Quality Scale:  $Q_a=58.4$ ,  $Q_f=47.9$ ,  $Q_p=78.1$ ,  $Q_g=123.8$   
 Q1 =58 Q2 =72 Q3 =81 Q4 =71 Q5 =86 Q6 =90 Q7 =81 Q8 =73  
 Q9 =74 Q10=52 Q11=29 Q12=22 Q13=38 Q14=74 Q15=57



**Photometric Parameters**

Luminous Flux: 733.93 lm	Efficiency: 52.63 lm/W	Radiant Power: 3.296 W
Total mains efficacy: 48.73 lm/W	Energy Efficiency Class: G (EU 2019/2015)	

**Electric Parameters**

Voltage: 24.000V	Current: 0.5811A	Power: 13.95W
Power Factor: 1.0000	Frequency: 0.00Hz	

**Test Infomation**

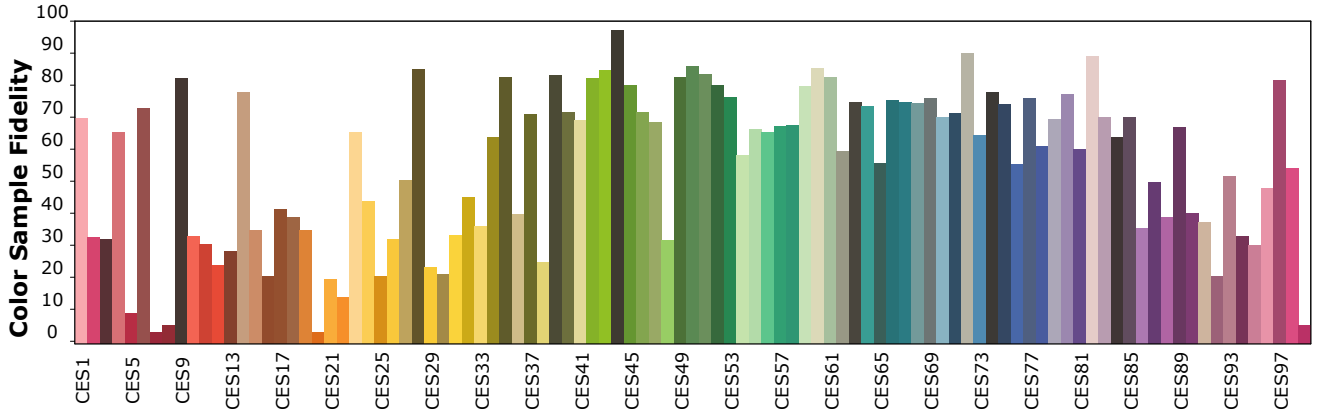
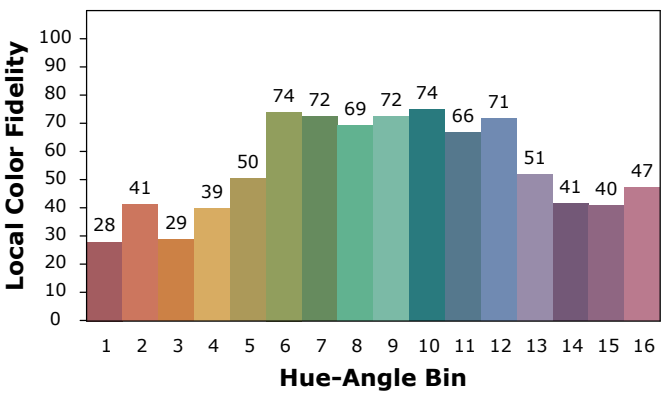
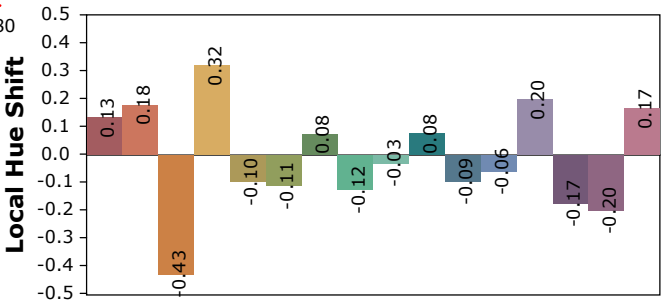
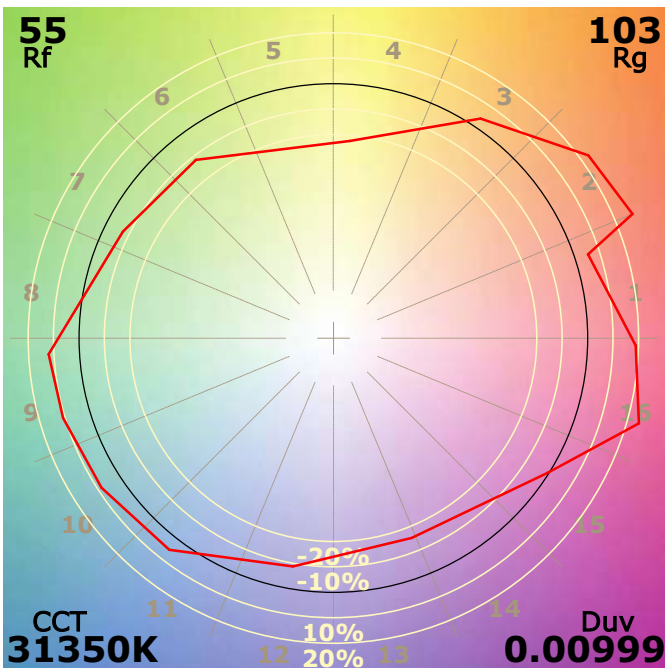
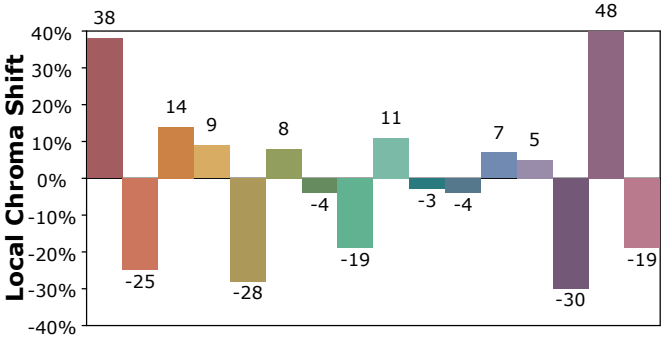
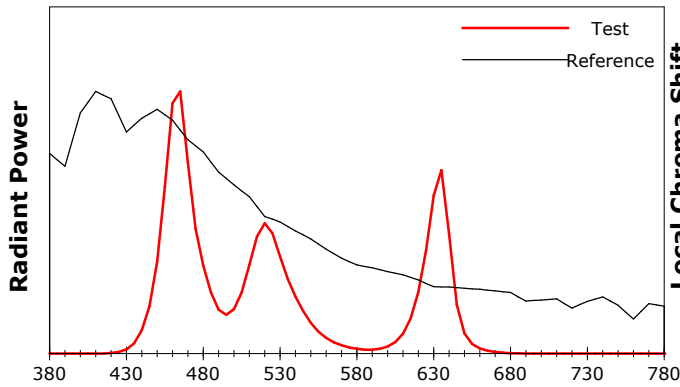
Scan Range: 380~800:1nm	Photometric Method: sphere-spectroradiometer
Stabilization Time: 0 Sec ALC.: 1.0000	Photometric Condition: Sphere diameter: 1.50m, 4PI
Max of Signal: 49590 (2022)	CCD Integration Time: 230.70 ms

## IES TM-30-18 Color Rendition Report

**Product Information**

Product Category: LED STRIP  
 Product Spec: 21059602440601  
 Manufacturer: TECSOLELED S.L.

Product Type: LED STRIP  
 Product Number: 293  
 Buyer: TECSOLELED S.L.



Condition: Tx:18.1'C, Ti:17.8'C, R.H.:60%  
 Test Lab: TECSOLELED S.L.  
 Operator: JORDAN GIL DIAZ

Test Device: Inventfine CMS-2S (Plus)  
 Test Time: 2021-11-02 09:25:59  
 Inspector: